



Website Examples

877-247-4394 | info@agricharts.com | www.AgriCharts.com



NEW COOP GRAIN BIDS

BADGER	CORN	SOYBEANS
DEC 10	\$5.87	\$13.20
JAN 11	\$5.87	\$13.20
MAR 11	\$5.89	\$13.20
MAY 11	\$5.96	\$13.27
JUL 11	\$5.99	\$13.25
OCT 11	\$4.99	\$11.95
JAN 12	\$5.08	\$12.01



[change location](#)

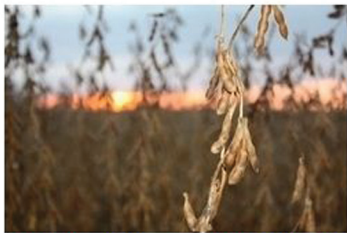


[bid details](#)

- [OUR STORY](#)
- [LOCATIONS](#)
- [NEWS](#)
- [AGRONOMY](#)
- [GRAIN](#)
- [NEW FEEDS](#)
- [EMPLOYMENT](#)

Welcome

Adding Value To Our Members' Operations



Holiday Schedule

NEW Cooperative will be closed Friday, December 24 and Friday, December 31. We wish you a safe and Happy Holidays and a prosperous New Year!

NEW Cooperative Inc. is a member-owned cooperative with 23 locations throughout the Northwest region of Iowa. In addition to their historically strong grain department, NEW also provides feed, fertilizer, crop protection and seed services through a professional staff and quality facilities. Further agronomic opportunities in soil mapping, site-specific field management and precision technology services are offered through their MAPS department. The service and solutions found at NEW Cooperative demonstrate that they continue to be an innovative and efficient provider for today's producer.

NEW Cooperative is now ready to accept grain for free Price Later. This will be as space allows, so please check with your nearest location for more details.

Fort Dodge Main Office: (515) 955-2040

[Futures](#)

[more](#)

[News & Press](#)

[more](#)

Weather

[SET LOCATION](#)

HUMBOLDT, IA

Current conditions observed at **Fort Dodge, IA** 27.0°F



Wind Chill: 17°F
 Wind: South at 11.5 mph
 Humidity: 80%
 Barometer: 29.68 in.
 Visibility: 5.00 mi.

Wed	Thu	Fri	Sat
Chc Drizzle	Cloudy	Snow/Sleet Likely	Mostly Cloudy
HI 36 LO 34	HI 40 LO 30	HI 30 LO 2	HI 12 LO 1



Weather Radar [click here to view](#)

For more weather and radar visit [Weather Underground](#)

New Cooperative Inc.
www.newcoop.com

Bringing producers and industry together.

SERVING COOPS

Halstead

Hillsboro

Moundridge

Nickerson

Search
tmagrain.com



Patron Access

307 W. Cole, Moundridge, Kansas

OUR MISSION:
"To provide grain marketing service that links the producer to the end user, giving the greatest value to both parties."

GRAIN INFO HOTLINE:
800-753-6402

Mobile Version:
m.tmagrain.com

Markets

Commentary

Crop Insurance

Marketing

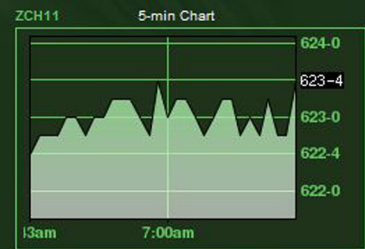
Calendar

Contact

About

FAQ

TMA Markets



Symbol	Last	Chg
✖ Corn	623.4	+0.2
Soybeans	1388.6	-7.0
KC Wheat	856.2	-4.2
Crude Oil	91.18	-0.31
Dow Jones	11,529	+20
S&P 500	1,258.50	+2.50
U S Dollar	80.540	-0.130

Market Data provided by Barchart.com

New for 2011
Revisions to Crop Insurance for 2011

Improvements and changes for 2010

PDF | PRINT | E-MAIL

To our valued customers:

If you have contracted corn, soybeans, milo, or sunflowers to be delivered to a TMA location for the 2010 crop year, it is our responsibility to keep you informed on the improvements and changes you will experience this harvest



Team Marketing Alliance
www.tmagrain.com



AGMARK LLC General Office
 204 East Court PO Box 444
 Beloit, KS 67420-0444
 888-848-9979 • 785-738-9641 • info@agmarkllc.com
 Concordia 888-800-2909 • 785-243-1797

Providing long term grain marketing solutions for North Central Kansas.

Merry Christmas and Happy New Year.... AgMark will be Closed Friday Decemb

- AgMark LLC
- Site Login
- View Info/Login
- Homepage
- Services
- Marketing Updates Login
- Locations & Maps
- About Us
- Site Registration
- Contact Us
- OUR CASH BIDS
- Cell Phone Market Updates
- Dynamic Pricing Platform
- Market Data
- Quick References
- Futures Quotes
- County LDP Data
- Custom Charts
- Brugler Market Commentary
- Stewart-Peterson Commentary
- CRE News
- Dairy Market Update
- USDA Reports
- Weather & Links
- Local Weather
- Ag Links
- AgMark Services
- Crop Insurance

AgMark LLC

Member Locations:

AgMark Terminal - Asherville - Beloit - Cawker City - Clay Center - Concordia (East) - Denmark - Glen Elder - Hunter - Jamestown - Jewell - Kackley - Leonardville - Lincoln - Miltonvale - Randall - Scottsville - Solomon Rapids - Tipton - Vesper - Westfall



Providing long term grain marketing solutions



AgMark LLC
 www.agmarkllc.com



717 West Bertrand, St. Marys, KS 66536

1-888-595-7553

Get a Quote

- Futures
- Stocks

Select a Commodity

Farmers Union Coop

- Home
- History
- Employee Directory
- Employment Opportunities
- Ground Temperature
- Main Office
- Grain
- Lawn
- Petroleum
- Pro Farmer
- Valley Irrigation
- Irrigation Pivot Insurance
- Crop Production
- Wamego
- Harveyville
- Newsletters
- Board of Directors

Market Data

- Market Overview
- Cash Bids
- Futures
- Options
- Charts

Futures Ticker

Feeder Cattle (P) Jan 11 Live Cattle (P) Dec
120.700¢ -0.000 105.450¢ +0.550

Welcome to St. Marys Farmers Union Coop Website

Please check out our [Crop Production](#) page for the results of 2010 Plots.

Farmers Union Coop Business Association

717 W Bertrand • P.O. Box 218
St. Marys, KS 66536
(785) 437-2985 • (888) 595-7553
Monday - Friday 8:00 a.m. to 5:00 p.m.



Market Commentary

Corn - Morning Report - December 29, 2010

Corn futures are expected to open steady to 2 cents lower. Corn stocks at select export elevators increased 43,000 bushels from last week which of

Soybeans - Morning Report - December 29, 2010

Soybeans futures are called 5 to 7 cents lower this morning. The market focus is on Argentine weather and Chinese demand. China's Commerce

Your Cash Prices (All Bids Subject To Change Anytime)

Name	Notes	Cash Price
Corn	Dec 2010	\$5.73
Corn	Sep/Oct 2011	\$4.82
Milo	Dec 2010	\$5.44
Soybeans	Nov/Dec 2010	\$13.11
Soybeans	Oct 2011	\$11.89
Wheat	Dec 2010	\$7.36

Farmers Union Coop
www.smcoop.com



- [HOME](#)
- [ABOUT US](#)
- [AGRONOMY](#)
- [GRAIN](#)
- [FEED](#)
- [ENERGY](#)
- [LOCATIONS](#)
- [SITE LOGIN](#)
- [CONTACT US](#)

Welcome

Address: P.O. Box 38 Marble Rock, Iowa 50653

Hours: M-F 7:30am-5:00pm

Phone: 800-992-2516

[Connections Newsletter](#)

Grov

To view your account click on:

[farmerdata](#)

[Online Cash Bids Offers Click Here](#)

Markets & Weather Info.

[Cash Bids](#)

[Ag News](#)

[Market Center](#)

[CNN News](#)

[Grain Futures](#)

[Commentary](#)

[Stock Lookup](#)

[Weather Center](#)

NewsWire

- Tourist spending in Hawaii rises by almost a third AP - 1 min ago
- AeroVironment gets \$46.2M order for military UAS AP - 3 mins ago
- Kan. rescinds water rights moratorium for aquifer AP - 4 mins ago
- German inflation seen up to 1.7 pct in December AP - 11 mins ago
- Analyst: Good year for toys, Mattel outperforms AP - 22 mins ago
- Hungary's tough new laws worry other EU countries AP - 28 mins ago
- Early calls for the grain commodities AGCOM - 32 mins ago
- Ahead of the Bell: Mindray receives 'buy' rating AP - 35 mins ago
- Charity begins at the ATM: UK seeks more donations AP

Market Snapshot

Name	Month	Open	High	Low	Last Change
Corn	Mar 11	622-4	624-8	619-0	623-4 +0-2
Corn	May 11	630-2	632-2	627-0	631-2 0-0
Corn	Jul 11	634-0	638-0	630-4	634-4 0-0
Corn	Sep 11	585-0	585-0	582-2	584-6 -0-2
Corn	Dec 11	555-0	558-0	554-6	556-0 -1-2
Corn	Dec 12	518-0	520-0	518-0	518-6 0-0
Soybeans	Jan 11	1374-0	1377-4	1363-4	1368-6 -7-0
Soybeans	Mar 11	1386-2	1389-0	1374-6	1380-2 -6-6
Soybeans	May 11	1392-4	1395-4	1382-0	1386-6 -6-6
Soybeans	Jul 11	1395-2	1398-0	1385-0	1390-0 -6-0
Soybeans	Nov 11	1277-0	1283-6	1270-2	1275-2 -3-4
Soybeans	Nov 12	1205-6	1216-0	1204-2	1204-2p -2-0
Soybean Meal	Jan 11	368.5	368.6	364.2	367.0 -1.6
Soybean Meal	Mar 11	372.0	372.8	368.0	370.9 -1.7
Live Cattle	Dec 10	105.450	105.775	105.450	105.775 +0.325
Feeder Cattle	Jan 11	120.700	121.025	120.625	120.750 +0.050
Lean Hogs	Feb 11	78.650	78.950	78.500	78.825 +0.200

Viafield
www.viafield.com



ELKHART GRAIN COMPANY

Home Quotes Contact Bids

Tuesday, January 11, 2011

Elkhart Grain

- Company Profile
- Our Employees
- Locations
- New Projects
- 2010 Harvest Policies
- Corn Damage and TW Discounts
- Message Board

Market Data

- Cash Bids
- Market Overview
- Futures
- Options
- Market Heat Maps
- Charts
- Custom Charts
- Spread Charts
- Historical Data
- Real-Time
- News & Commentary
- Ag Calendar
- InsideFutures
- CRB News
- Commentary
- USDA News & Reports

Weather

Local Weather

Admin

Welcome

Elkhart Grain Company's Goal is to deliver superior services to our production customers and a superior product to our end user ... [Click Here](#)

Elkhart Grain Employees, with nearly one hundred years of combined experience in grain storage, handling, merchandising and accounting, the employees at Elkhart Grain work... [Click Here](#)



[Elkhart Grain Message Board, Click Here For More Details>>>](#)

Futures Quotes

Name	Month	Open	High	Low	Last	Change	Percent	Trade Time
Corn	March 2011	608-0	614-0	608-0	612-0	+5-0	+0.82%	10:41:38 CST
Corn	May 2011	616-2	622-4	616-2	620-4	+5-0	+0.81%	10:41:33 CST
Corn	July 2011	621-2	626-6	620-4	624-4	+4-2	+0.69%	10:41:33 CST
Corn	December 2011	548-0	553-2	547-0	551-2	+3-2	+0.59%	10:41:38 CST
Soybeans	January 2011	1376-4	1380-0	1369-0	1369-2	-4-0	-0.29%	10:38:54 CST
Soybeans	March 2011	1382-0	1388-4	1375-0	1375-6	-4-6	-0.34%	10:41:38 CST
Soybeans	May 2011	1389-6	1396-0	1383-0	1384-0	-4-4	-0.32%	10:41:38 CST
Soybeans	November 2011	1287-6	1295-4	1280-6	1286-0	-1-6	-0.14%	10:41:31 CST
Wheat	March 2011	769-6	776-6	767-2	769-6	+2-4	+0.33%	10:41:35 CST
Wheat	May 2011	798-4	804-6	795-0	796-6	+1-6	+0.22%	10:41:35 CST
Wheat	July 2011	817-6	825-2	816-0	818-0	+1-2	+0.15%	10:41:32 CST
Wheat	July 2011	817-6	825-2	816-0	818-0	+1-2	+0.15%	10:41:32 CST

Quotes retrieved on January 11, 2011, 10:51:35 AM CST

Please Note:

Cash Bids are updated every 10 minutes during the trading session and during the overnight (electronic) session. Cash bids are approximate, and all final bids will be determined mutually by the seller and Elkhart Grain in person or by phone.

Do you farm ground affected by Lake Fork Ditch?

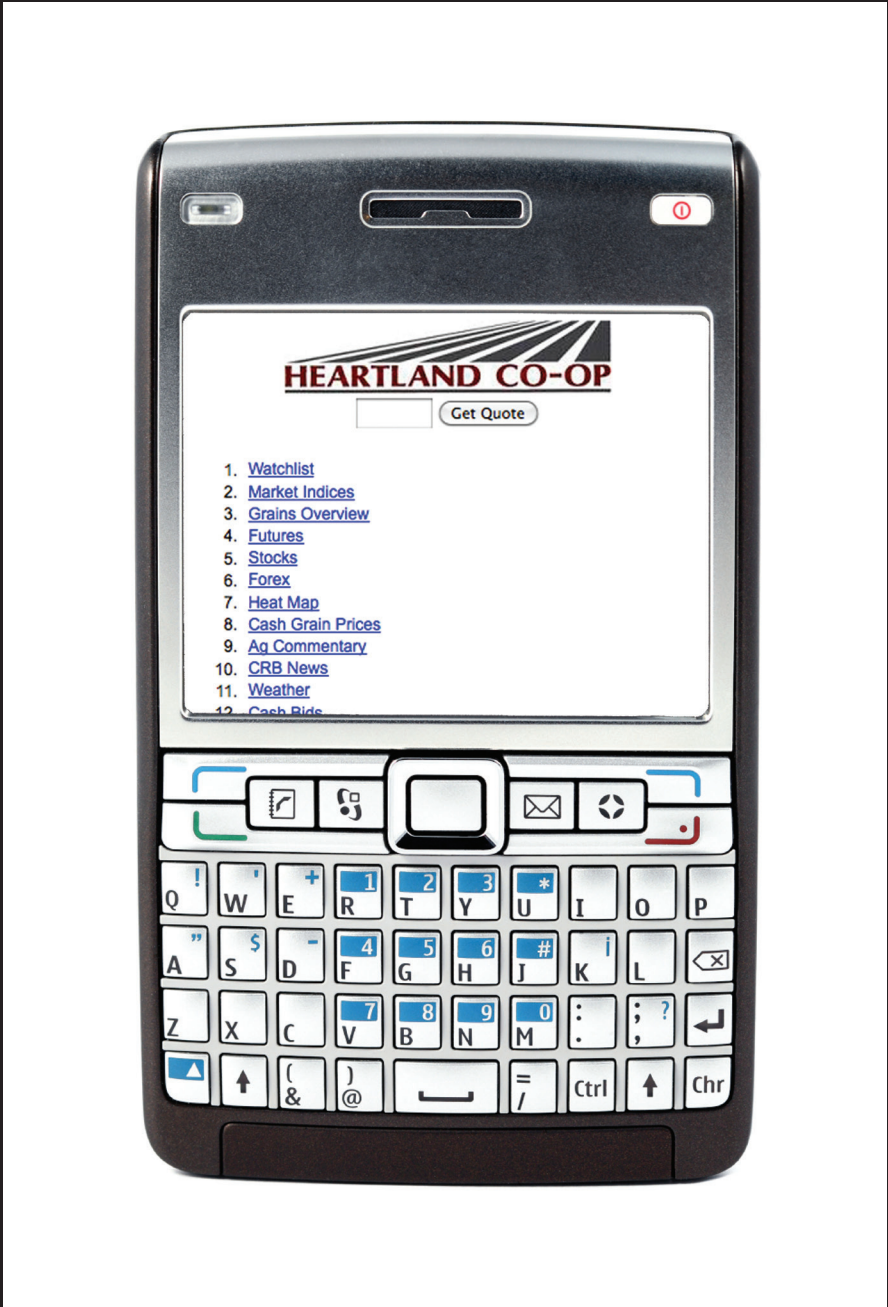
Click [here](#) to view the USGS (United States Geological Survey) webpage which measures gage height and water flow through Lake Fork at Rt 54.

Elkhart, Broadwell

Name	Delivery Start	Delivery End	Cash Price
Corn	Jan 01, 2011	Jan 31, 2011	\$5.81
Corn	Mar 01, 2011	Mar 31, 2011	\$5.91

Elkhart Grain Company
www.elkhartgrain.com

877-247-4394 | info@agricharts.com | www.AgriCharts.com



Heartland Co-op
www.heartlandcoop.mobi



Producer Mobile
www.producermobile.com